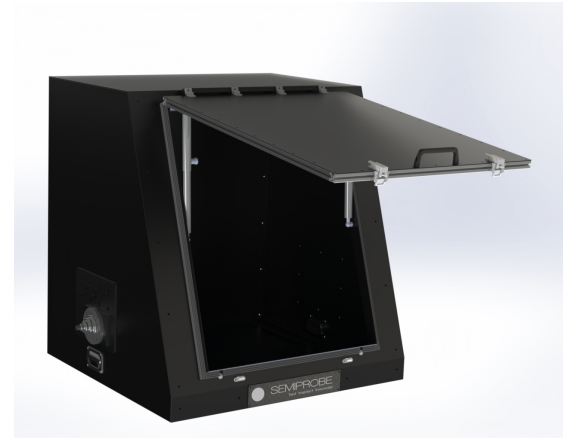


DARK BOX – for small footprint systems

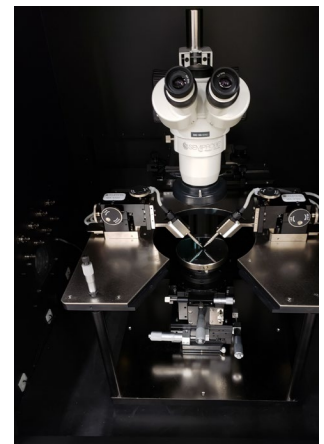


DATA SHEET - Lab Assistants and mini-PS4L Systems

SemiProbe manufactures and designs a few different sized dark boxes. Our small footprint dark box will handle our Lab Assistant and mini-PS4L probe system families. It is designed to be placed on an existing table or bench. It can also be placed on a stand-alone vibration isolation table. The box has welded seams and a solid base. The probe system is inserted inside via the front door opening. The door is opened from the front and is raised up and held in place with two (2) gas shocks with locking pull-plungers. To close the door the pull-plungers are released. The door has two (2) locks to insure a light-tight environment. With the door raised the user has easy access to the prober and test equipment controls.



The dark box is provided with interconnect panels on both sides. One interconnect panel is usually supplied with application specific feed through connectors (coaxial, triaxial, high voltage, high current, high frequency and more). The interconnect panel also has a rubberized boot that allows direct pass through of cables (high frequency, fibers and more). The other interconnect panel is blank to allow for customization by the customer. The rear of the box has a light trap feedthrough that allows easy insertion of prober control cables, illuminator light source, thermal chuck cable/cooling lines and other optional equipment control cables that may be required depending on application.



OPTIONS & ACCESSORIES

Test Interface Panels (removable panels on either side of the dark box can be ordered with any number of bulkhead connector types to connect to test instrumentation), **Monitor & Keyboard Mounts, Lights, Safety Interlocks and more.**

SPECIFICATIONS

For all Lab Assistant and mini-PS4L Probe Systems

